

## CLASS 4 SHEEP

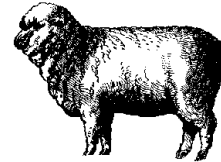
1. The following breeds will be shown separately; Romney, Scottish Blackface, Icelandic, SouthDown. All other Wool Breeds and All Meat Breeds. All other breeds will be competing together. When there is little or no competition on any listed breed, the fair may group them with other breeds.
2. The committee may refuse admission of any animal showing signs of disease, injury, or poor health.
3. All exhibitors **must** clean up their animals' area at the end of the fair and have approved by Fair personnel otherwise premiums will not be paid out. Wheelbarrows/shovels recommended.
4. Entries received after the deadline (Aug. 25<sup>th</sup>) will be accepted at the discretion of the fair.

### SECTION A: SHOWMANSHIP

1<sup>st</sup> - \$10.00      2<sup>nd</sup> - \$9.00      3<sup>rd</sup> - \$8.00      4<sup>th</sup> - \$7.00      5<sup>th</sup> - \$6.00

#### LOT

1. Novice First Year Showman
2. Junior - 7 to 12 years of age by September 1, 2018
3. Senior - 13 through 19 years of age as of September 1, 2018
4. Adults - Age 20 and older as of September 1, 2018
5. Costume Class – Ribbons Only



### SECTION B: SHEEP BREED CLASSES

1<sup>st</sup> - \$8.00      2<sup>nd</sup> - \$6.00      3<sup>rd</sup> - \$5.00      4<sup>th</sup> - \$3.00      5<sup>th</sup> - \$2.00

#### LOT

7. Ram Lamb
8. Ewe Lamb
9. Ram over 1 year
10. Ewe Yearlings
11. Aged ewe
12. Market Lamb – Lightweight (wether or ewe)
13. Market Lamb – Heavyweight (wether or ewe)
14. Pet Wether
15. Two lambs, male or female

### SECTION C: GROUP CLASSES (Lots 19-20 Entry form to be completed at fair)

1<sup>st</sup> - \$12.00      2<sup>nd</sup> - \$8.00      3<sup>rd</sup> - \$6.00      4<sup>th</sup> - \$5.00      5<sup>th</sup> - \$3.00

#### LOT

16. Exhibitor Flock (1 ram, 3 ewes, any age, all owned by exhibitor.)
17. Ewe, 2 lambs
18. Get of Sire (3 animals, any sex, sired by same ram)
19. Club Herd (4 animals, any age, owned by at least 3 exhibitors)

### SECTION D: FLEECE OFF ANIMAL (Enter on Agricultural Exhibit Entry Form)

1<sup>st</sup> - \$8.00      2<sup>nd</sup> - \$6.00      3<sup>rd</sup> - \$5.00      4<sup>th</sup> - \$3.00      5<sup>th</sup> - \$2.00

#### LOT

20. Fleece on Animal
21. Fleece off Animal

### SECTION E: FLEECE TO SHAWL - Demonstration Only

#### LOT

22. Fleece to Shawl