

## CLASS 3 GOATS

1. The following breeds will be shown separately in the following order: Alpine, LaMancha, Nigerian Dwarf, Nubian, Oberhasli, Sannen, Toggenburg, Recorded Grade. When there is little or no competition on any listed breed, the Fair may group them with other breeds.
2. Age of animals to be taken as of date of show.
3. The committee may refuse admission of any animal showing signs of disease, injury, or poor health.
4. All exhibitors **must** clean up their animals' area at the end of the Fair and have approval by Fair personnel otherwise premiums will not be paid out. Wheelbarrows/shovels recommended.
5. Entries received after the deadline (August 31<sup>st</sup>) will be accepted at the discretion of the Fair.

### SECTION A SHOWMANSHIP

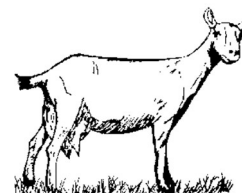
1<sup>st</sup> - \$10.00      2<sup>nd</sup> - \$9.00      3<sup>rd</sup> - \$8.00      4<sup>th</sup> - \$7.00      5<sup>th</sup> - \$6.00

#### LOT

1. Novice - First Year Showman
2. Junior – 7 to 12 years of age by Sept. 1, 2022
3. Senior - 13 through 19 years of age as of Sept. 1, 2022

#### LOT

4. Adults - Age 20 and older as of Sept. 1, 2022
5. Costume Class – Ribbons Only



### SECTION B: DAIRY GOATS MILKING CLASSES

1<sup>st</sup> - \$8.00      2<sup>nd</sup> - \$6.00      3<sup>rd</sup> - \$5.00      4<sup>th</sup> - \$3.00      5<sup>th</sup> - \$2.00

#### LOT

7. Milking Does (1 – 3 years)
8. Milking Does (4 - 5 years)

#### LOT

9. Milking Does (6+ years)

### SECTION C – DAIRY GOAT DRY DOE CLASSES

1<sup>st</sup> - \$8.00      2<sup>nd</sup> - \$6.00      3<sup>rd</sup> - \$5.00      4<sup>th</sup> - \$3.00      5<sup>th</sup> - \$2.00

#### LOT

10. Doe Kids (1-5 months)
11. Doe Kids (6 -12 months)

#### LOT

12. Dry Does (13 – 24 months)

### SECTION D – FIBER GOATS

1<sup>st</sup> - \$8.00      2<sup>nd</sup> - \$6.00      3<sup>rd</sup> - \$5.00      4<sup>th</sup> - \$3.00      5<sup>th</sup> - \$2.00

#### LOT

13. Does (1- 12 months)
14. Does (13 – 24 months)

#### LOT

15. Does (2 years and over)
16. Wethers (fiber producing)

### SECTION E – PET AND MEAT GOATS

1<sup>st</sup> - \$8.00      2<sup>nd</sup> - \$6.00      3<sup>rd</sup> - \$5.00      4<sup>th</sup> - \$3.00      5<sup>th</sup> - \$2.00

#### LOT

17. Meat Goats – Any Age
18. Pet does (over 2 years never been bred or now dry)
19. Pet Wethers (if shown in fiber cannot be shown here too)
20. Harness goats – shown in harness and cart – cannot be shown in any other breed class as pet

### SECTION F – GROUP CLASSES *(Lots 21 to 24 must be pre-registered and owned by 1 farm or family)*

1<sup>st</sup> - \$12.00      2<sup>nd</sup> - \$8.00      3<sup>rd</sup> - \$6.00      4<sup>th</sup> - \$5.00      5<sup>th</sup> - \$3.00

#### LOT

- |   |  |
|---|--|
| <ol style="list-style-type: none"> <li>21. Herd (4 females owned by 1 farm or family)</li> <li>22. Dam and Daughter</li> <li>23. Produce of Dam (2 animals, any age, produced of one doe)</li> <li>24. Get of Sire (3 animals, all of same sire)</li> </ol> | <ol style="list-style-type: none"> <li>25. Club Herd (4 animals any breed owned by at least 3 exhibitors in a recognized club). Clubs can sign up for this class at fair. One exhibitor will receive premium to be divided with other members. Designated club member must be named for show steward.</li> </ol> |
|---|--|